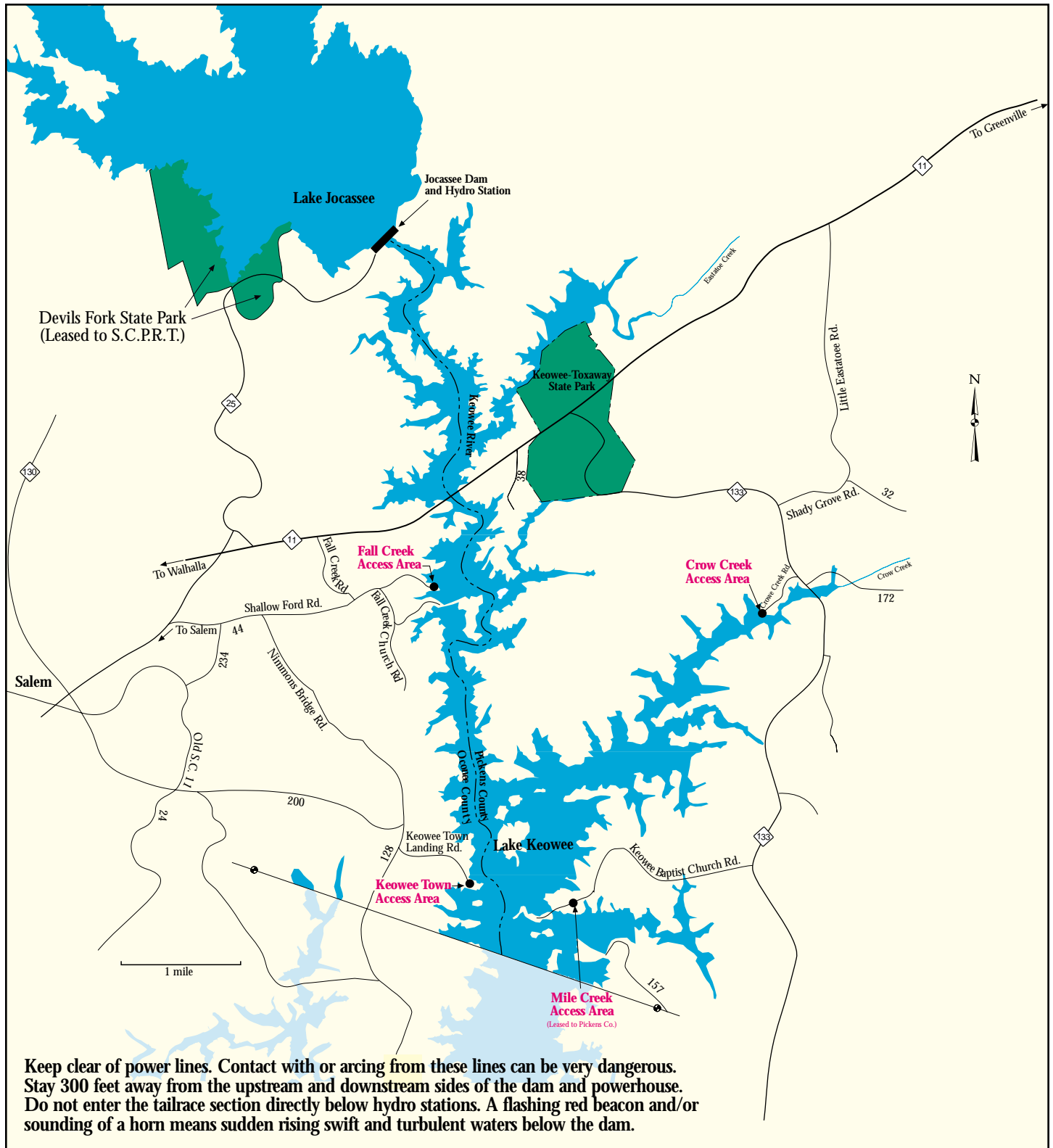
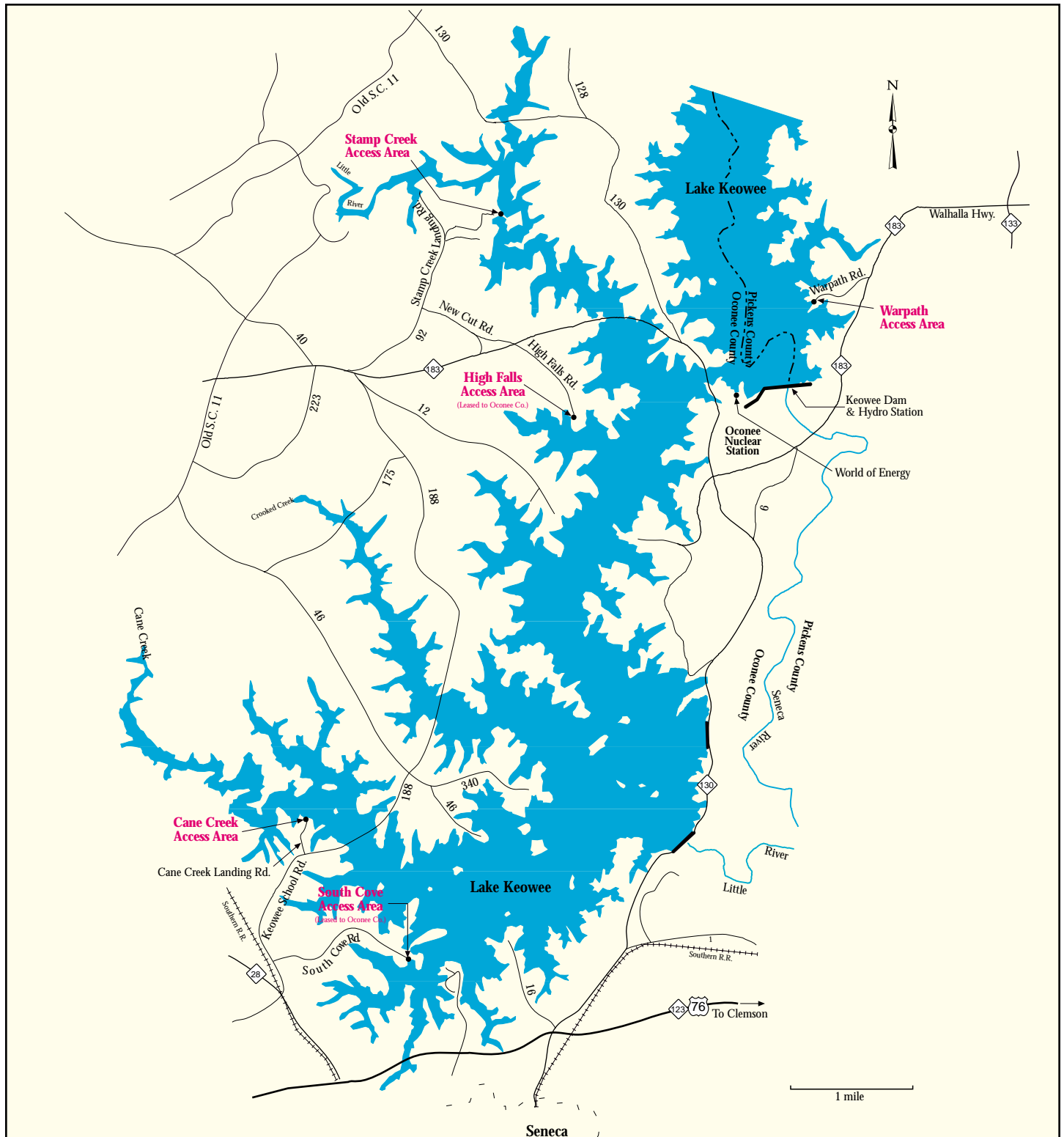


# Lake Keowee (Upper)



Keep clear of power lines. Contact with or arcing from these lines can be very dangerous. Stay 300 feet away from the upstream and downstream sides of the dam and powerhouse. Do not enter the tailrace section directly below hydro stations. A flashing red beacon and/or sounding of a horn means sudden rising swift and turbulent waters below the dam.

# Lake Keowee (Lower)



Keep clear of power lines. Contact with or arcing from these lines can be very dangerous. Stay 300 feet away from the upstream and downstream sides of the dam and powerhouse. Do not enter the tailrace section directly below hydro stations. A flashing red beacon and/or sounding of a horn means sudden rising swift and turbulent waters below the dam.